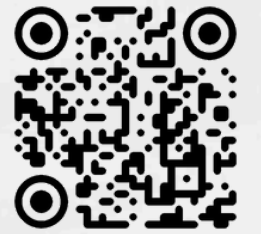


AccurAPM
Asset Performance Management
Solution

alpha@AccurDigital.com



ACCUR DIGITAL

Unlocking the Hidden Insights

www.AccurDigital.com



ACCUR DIGITAL

KEY BENEFITS

Enhanced Availability and Reliability

Increases system availability and reliability by continuously monitoring performance and predicting potential issues, ensuring uninterrupted operations and minimizing downtime for critical systems.

Risk Mitigation

Mitigates operational risks through advanced monitoring and predictive maintenance, identifying potential failures before they occur, and implementing preventative measures to avoid costly disruptions and repairs.

Improved Decision Making

Seamlessly integrates with other enterprise systems, enhancing overall operational efficiency. This interoperability allows for streamlined workflows and better resource management.



Integration with Systems

Seamlessly integrates with other enterprise systems, enhancing overall operational efficiency. This interoperability allows for streamlined workflows and better resource management.

Compliance and Reporting

Ensures regulatory compliance by maintaining accurate records and automating the generation of necessary reports. This helps organizations meet industry standards and regulatory requirements with ease, avoiding potential fines and penalties.

Cost Savings

Optimizes energy usage and reduces waste, leading to significant long-term cost savings. Predictive maintenance further lowers costs by extending equipment lifespan and reducing unplanned maintenance expenses.

User-friendly Interface

Offers intuitive dashboards and interfaces for easy access and understanding of energy data, facilitating better energy management practices and empowering users to make informed decisions quickly.

AccurAPM Modules

RBI

Facilitates Risk Based Inspection (RBI) analysis for oil & gas, chemical, and power plants in adherence to the principles and guidelines presented in API 580/581 publications.



IDMS

A comprehensive module to streamline the entire process of collecting, storing, and analyzing inspection and corrosion data, with a configurable approval cycle to perfectly align with your business workflow.



RCM

A structured process to determine the most effective maintenance strategies to ensure reliable operation. Focuses on understanding the functions of assets, potential failure modes, and their effects.



Core

Enables data migration, security management, data loader, Query Composer for data extraction, and Asset Hierarchy, ensuring accurate asset management and dynamic configuration.



Data Insights and Reporting

Gain valuable insights with our BI systems and detailed reports. The Asset 360 Report provides smart, comprehensive reporting on equipment health, incorporating data from all modules for informed decision-making.



Accur3D Explorer

3D Model Visualization Tool



Accur APM promotes the use of engineering methodologies to evaluate and develop your asset strategy through a comprehensive set of modules related to risk assessment and analysis techniques



MOC

Configurable MoC Workflow: Designed to manage and document changes. The workflow configuration will be tailored during the design workshop to meet requirements.



SAP bi-directional

Integrates with CMMS, specifically SAP, allowing for synchronized & efficient maintenance management by reading master data & writing back notifications and work requests.



ACA

Asset Criticality Analysis module to allow users to define Systems and equipment criticality based on different COF categories and POF which can be utilized further in defining the proper inspection and maintenance approach.



Reliability > Risk Based Inspection > AccurAPM

RBI Components 318 Corrosion Loops 30 Pending Calculations 33 Pending Approvals 18 Pending Reassessment 0 Inventory Groups 60

Corrosion Loop ID	Identifier	Name	Number of Components	Modified By	Modified On	Action
Function location: J000000000 - 3 Items						
RBI-CL-001	Gasifier	Gasifier	20	J000000000	25-Jan-2024 10:00	View Edit
RBI-CL-002	Gasifier	Gasifier	10	J000000000	25-Jan-2024 10:00	View Edit
RBI-CL-003	Gasifier	Gasifier	10	J000000000	25-Jan-2024 10:00	View Edit
Function location: J000000000 - 1 Item						
RBI-CL-004	Gasifier	Gasifier	10	J000000000	25-Jan-2024 10:00	View Edit

1 to 12 of 18

IOW ID	IOW Parameter	Affected CL	Deviation Date	Status	Action
J000000000	Shaking period	RBI-CL-01	23-Jan-2024	deviated	Acknowledge
J000000000	Shaking period	RBI-CL-01	01-Mar-2024	deviated	Acknowledge
J000000000	Shaking period	RBI-CL-01	08-Apr-2024	deviated	Acknowledge
J000000000	Shaking period	RBI-CL-01	08-Apr-2024	deviated	Acknowledge

Decision Log

1. Will the loss of function caused by the failure mode in its own failure affect the safety of the system?	Yes
2. Is there evidence that the effects of the failure mode could result in the loss of life or a serious injury?	Yes
3. Is there evidence that the failure mode could result in a serious environmental incident or a major spill?	Yes
4. Does the failure mode have a different adverse effect on operational capability?	Yes
5. Is a preventive maintenance task applicable and effective?	Yes
6. Is a preventive maintenance task applicable and effective?	Yes
7. Is a preventive maintenance task applicable and effective?	Yes

Home > IDMI > Corrosion Analysis > AccurAPM > Corrosion Analysis > Corrosion Analysis

Assets Hierarchy Assets Hierarchy CML List CML Overview Corrosion Analysis Setting Schematic View

Normal (5) Retired (2) Deviated (3) Growth (0) None (5)

CML ID	TAM	LTOR	STCR	Remaining Life (y)
J000000000				
J000000000				
J000000000				
J000000000				

Showing 1 - 5 of 5

Health > ACA > IDMS > RCM > MOC > 3D > Catalog > Query > Data Loader > Dashboard > Security > OT

Asset Strategy 7 Reports 105 Anomalies Management 9 Corrosion Analysis 6 Work Pack 0 Asset Without Strategy 0 Deferral Management 0

Executed Overdue Planned All

Task ID	Task Type	Interval Basis	Recurring	Interval	UCM	Last Inspection D	Next Inspection C	S/D Required	State
J000000000	External Inspection	userdefined	true	12.1	Month	2023-02-01T07:11...	2024-02-01T07:11...	false	Overdue
J000000000	RBI/ISI INTRUSIVE	RBI Basis	false			2024-02-02T11:11...	2032-04-20T00:00...	false	Planned
J000000000	CP Survey	userdefined	true	6	Month	2024-02-02T11:11...	2024-08-02T11:11...	false	Planned
J000000000	RBI/ISI INTRUSIVE	RBI Basis	false			2032-04-20T00:00...	2032-04-20T00:00...	false	Planned
J000000000	Condition Monitor...	userdefined	true	3	Year	2024-04-30T21:00...	2027-04-30T21:00...	false	Planned
J000000000	Internal Inspection	userdefined	false			2024-07-03T21:00...	2024-07-03T21:00...	true	Planned
J000000000	Condition Monitor...	userdefined	false			2024-08-18T00:00...	2024-08-18T00:00...	false	Overdue

1 to 10 of 10 Items per page

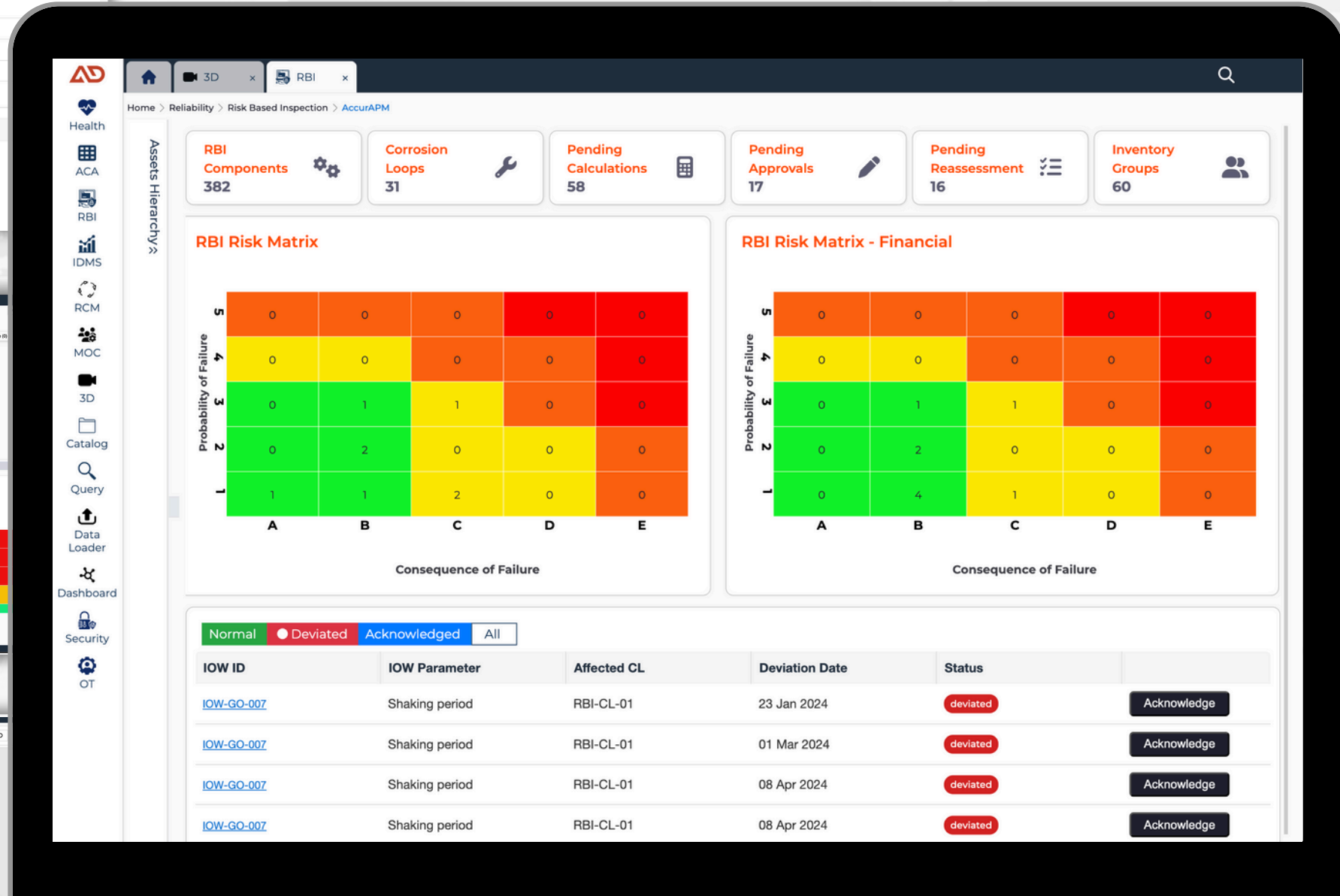
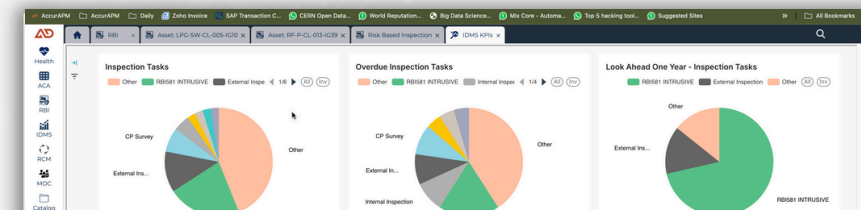
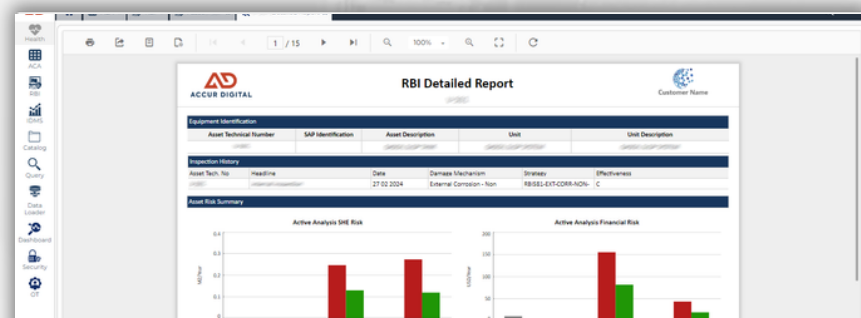
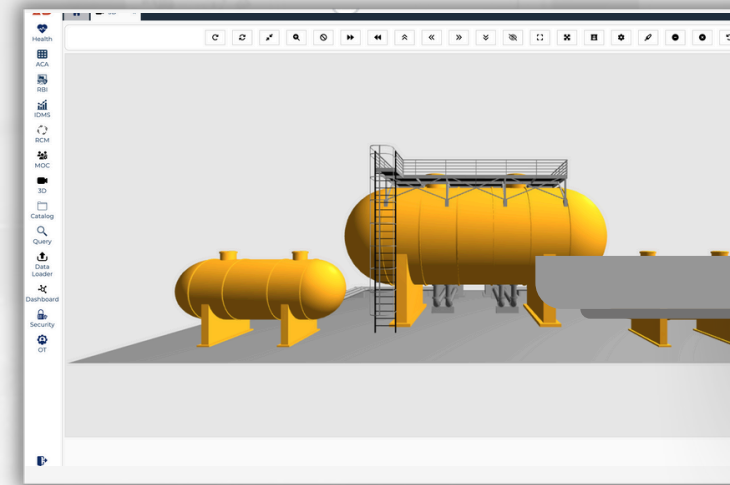
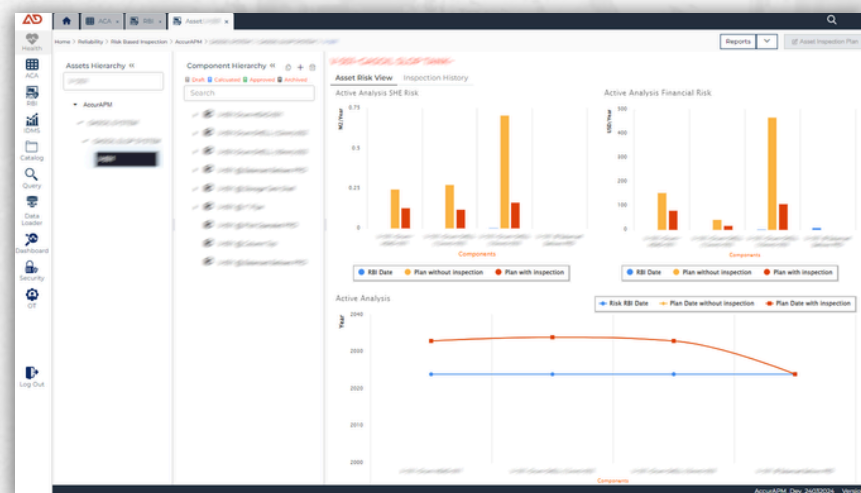
Home > IDMI > Corrosion Analysis > AccurAPM > Corrosion Analysis > Corrosion Analysis

Assets Hierarchy Assets Hierarchy CML List CML Overview Corrosion Analysis Setting Schematic View

Normal (5) Retired (2) Deviated (3) Growth (0) None (5)

CML ID	TAM	LTOR	STCR	Remaining Life (y)
J000000000				
J000000000				
J000000000				
J000000000				

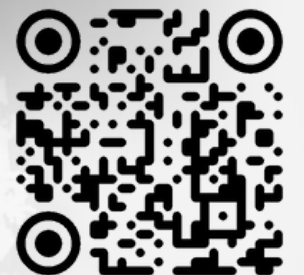
Showing 1 - 5 of 5



Copyright © Accur Digital 2024

All rights reserved. This presentation and its content are protected by copyright laws. Unauthorised use or reproduction of any part of this presentation without prior written permission is strictly prohibited.

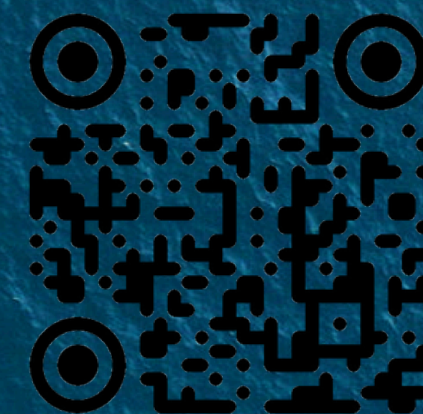
www.AccurDigital.com





ACCUR DIGITAL

Unlocking the Hidden Insights



Thank You

alpha@AccurDigital.com
www.AccurDigital.com

Copyright © Accur Digital 2024